

Heating Kings Langley

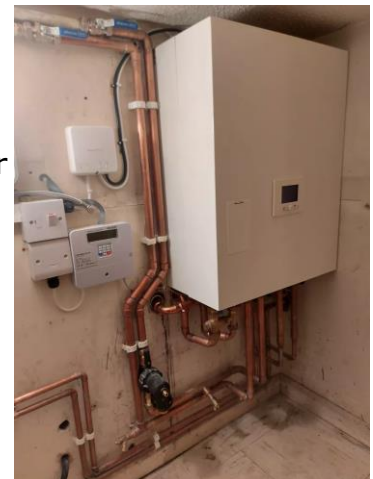
Did you cut back on your heating this winter due to rising costs? Do you wonder how your home will be warmed after gas boilers are phased out?



Grand Union Community Energy Ltd. (GUCE) is a non-profit community benefit society, which aims to develop renewable energy systems, provide communities with energy security through these systems, and promote ways to save money on bills. In 2015 we piloted the Transition Streets programme, bringing neighbours together to find ways of reducing their household bills and we've relaunched this for 2023.

We're also looking into alternatives to gas heating for Kings Langley residents and one option, widely used for decades in Scandinavian countries, is a district heating network - a community-wide heating system, with highly insulated water pipes delivering heat to a heat exchanger in each users home.

These domestic heat exchangers are roughly the same size and cost as conventional gas boilers and perform the same function by heating each homes' internal hot water system. Once the district heat network is installed and working, individual homes can be connected, one by one, just like other utilities. Systems like this have been proven to be hugely effective, cutting costs for households and their carbon footprint.



Last year, GUCE won a grant to study the possibility of extracting heat from the Grand Union Canal. We engaged Bioregional who found the canal temperatures and flow weren't consistent enough to heat more than a few homes.

All was not lost though and while exploring these issues they discovered that much larger and more reliable volumes of water were historically extracted from old boreholes beneath the Ovaltine site. If similar boreholes could be drilled opposite the Ovaltine, calculations show that enough energy would be generated to heat a majority of homes in Kings Langley!



The full report, as well as the community presentation slides and an Exec Summary can be found on our Heating Kings Langley website and are well worth a read: www.heatingkingslangley.guce.org.uk



Swaffam Prior Energy CentreEEEE which GUCE visited recently.

Heat Network installed beneath roads & Energy Centre at Swaffam Prior

We have a lot more questions to answer now. Would boreholes on the West side of the canal yield similar volumes of water? How much land could be available to house an Energy Centre? The list goes on and we need your views. Shall we keep looking at options for decarbonising Kings Langley homes and providing energy security in an increasingly uncertain energy market? There is a simple two minute survey on our website and would love to hear from all Kings Langley residents to see if they'd like us to keep investigating further. The survey can be found here:

<https://www.heatingkingslangley.guce.org.uk/get-involved>

Finally, saving energy will continue to be an urgent task for everyone into the foreseeable future. If you would like to take part in our next Transition Streets programme, please register via our website: www.guce.org.uk/our_projects/